



Morphophysiological Responses of Two *Chenopodium quinoa* Genotypes to Salinity in a Hydroponic System

Sirpaul Jaikishun^{a,b,c*}, Shikui Song^{a,b*} and Zhenbiao Yang^{b,d}

^a Fujian Provincial Key Laboratory of Haixia Applied Plant Systems Biology, College of Life Sciences, Fujian Agriculture and Forestry University, Fuzhou, Fujian, China.

^b FAFU-UCR Joint Center for Horticultural Biology and Metabolomics, Haixia Institute of Science and Technology, Fujian Agriculture and Forestry University, Fuzhou, China.

^c Department of Biology, Faculty of Natural Sciences, University of Guyana, Guyana.

^d Department of Botany and Plant Sciences, Institute of Integrative Genome Biology, University of California, Riverside, CA, USA.

Authors' contributions

This work was carried out in collaboration among all authors. Conceptualization, experimental design, writing of the original draft and preparation were done by authors SJ and ZY. Review and editing and supervision of the laboratory were done by authors ZY and SS. Biostatistical analyses and literature research were conducted by authors SJ and SS. All authors read and approved the final manuscript.

Article Information

DOI: 10.9734/ARJA/2023/v16i2383

Open Peer Review History:

This journal follows the Advanced Open Peer Review policy. Identity of the Reviewers, Editor(s) and additional Reviewers, peer review comments, different versions of the manuscript, comments of the editors, etc are available here: <https://www.sdiarticle5.com/review-history/100612>

Original Research Article

Received: 22/03/2023

Accepted: 26/05/2023

Published: 03/06/2023

ABSTRACT

The *Chenopodium quinoa* is poised to be a promising species for future food security and combating climate change because of its nutritional content and its halophytic peculiarity. This study focuses on the differential responses of salt-tolerant (*Chadmo*) and salt-sensitive (*Kankolla*) under control (CK) and 400 mM sodium chloride (NaCl) in five temporal dimensions (1/2, 1, 3, 6, and 24 h post-treatment time points). Morphological and physiological features assessed include

*Corresponding author: E-mail: sirpaul.jaikishun@uog.edu.gy, shikui_song@fafu.edu.cn;

root/shoot dry weight ratio, relative water content (RWC), membrane stability index (MSI), total chlorophyll (CHL), and adaxial and abaxial epidermal bladder cells (EBC). The results indicated a reduction in dry biomass for both genotypes after treatment with *Chadmo* and *Kankolla* at 46.96% and 73.07%, respectively. Similarly, a significant reduction in the RWC with *Chadmo* at 16.69 % and *Kankolla* at 13.19% was detected. Under 400 mM NaCl condition and CK, *Chadmo*'s average net photosynthetic rate reduced from 15.73 ± 2.97 to $13.02 \pm 2.75 \mu\text{mol CO}_2 \text{ m}^{-1} \text{ s}^{-1}$, indicating 17.24% reduction while in the *Kankolla*, the reduction from was 13.43 ± 4.12 to $8.34 \pm 3.16 \mu\text{mol CO}_2 \text{ m}^{-1} \text{ s}^{-1}$ representing 37.92% decline. In addition, this study showed a significant difference ($p < 0.05$) being identified on ANOVA and Tukey analyses in root/shoot dry weight ratio, RWC, membrane stability index (MSI), total chlorophyll (CHL), and adaxial and abaxial epidermal bladder cells (EBC). Those measurement criteria increased by 14.45% and 3.45% in *Chadmo* and *Kankolla*, respectively, from the CK to 400 mM NaCl. Using these morpho-physiological responses to salinity, *Chadmo* proved to be the better-performing genotype when exposed to 400 mM NaCl and hence identified as the salt-tolerant genotype.

Keywords: Climate change; halophytes; nutrients; quinoa; resilience; salinity; salt-tolerant.

1. INTRODUCTION

The global population is marching towards an unprecedented proportion amidst the challenges of climate change, seemingly highly engineered by anthropogenic influences. Concomitantly, demands for food will have to be increased by 70% to provide for the ~ 9.8 and 11.2 billion people by the years 2050 and 2100, respectively [1-3]. Salinity affects about 6% and 20% of the total and irrigated lands, respectively [1,4]. Climate change models and other anthropogenic factors poignantly navigate at increasing aggregate global soil salinization by 50% in 2050 [1,5]. While some plants have adapted to a different mechanism to escape the impact of excess salt exposure, others remained susceptible and unable to continue their life cycle, as in the case of the glycophytes. Plants that survived high salinity devised the mechanisms of avoidance, exclusion, and compartmentalization of the ions that increase the toxicity of cells [3,6]. Halophytic plants can grow and produce viable seeds at ≥ 200 mM NaCl concentrations, lethal to about 99% of other plant species [7,8]. High salt concentrations in the soil or other growth media will cause hyperosmotic stress in roots and other structures [9,10]. It efficiently decreases the plant's ability to absorb water because of osmotic stress. Once absorbed, the water's ionic constituents Na^+ and Cl^- adversely affect the metabolic activities and reduce photosynthetic efficiency [11-13].

Quinoa has salt bladders that have approximately 1000-fold more volume space than regular epidermal cells. Hence, it can potentially load and sequester more ions and osmolytes than adjacent cells and plants without

salt glands [6,14,15]. Moreover, its ability to survive at salinity levels even higher than that of seawater makes it incomparable and more suitable than some other halophytes under such abiotic stress [16-19]. Quinoa can exclude salts and physiologically adjust them to minimize their effects in high concentrations [7]. Jacobsen et al [20] observed that the quinoa yield was the highest at 100 to 200 mM NaCl and, after that, decreased. Further support to this was provided by Hariadi et al. [16], who recorded significant inhibitory effects on seed germination at concentrations higher than 400 mM NaCl, while optimal plant growth was obtained between 100 and 200 mM NaCl with 'Titicaca' over a 70-day growth period. Gómez-Pando et al. [21] screened 182 quinoa accessions for salt tolerance and found that 25% exhibited greater than a 60% germination at 250 mM NaCl for seven days. In a pot experiment, these 15 accessions were further tested at 300 and 340 mM NaCl. The results indicated that 13 accessions showed a reduction in growth, while two grew 1.79 to 11% higher than the control (CK). Morales et al. [22] also observed that at 300 mM NaCl, quinoa cultivars 'Chipaya' and 'Ollague' showed a decrease in fresh weight, but at 450 mM NaCl, they sustained 50 and 40% higher transpiration rates than the CK, respectively.

Quinoa is becoming an important food crop because of its high nutritional composition and potential to grow in environmental stresses that would be detrimental to many other plants [13,23,24]. For these attributes, 2013 was recognized as the 'International Year of the Quinoa' by the Food and Agriculture Organisation (FAO) of the United Nations (UN) [23,25]. The objectives of this study were to

determine the morphological and physiological responses of two contrasting quinoa genotypes (salt-tolerant *Chadmo* and salt-sensitive *Kankolla*) used for salinity under the hydroponic system.

2. MATERIALS AND METHODS

2.1 Site of Experiment

The research was done the controlled greenhouse environment at the Fujian Agriculture and Forestry University, Fuzhou, China

2.2 Biological Materials

Two contrasting genotypes (salt-tolerant and salt-sensitive) were used in this study. The United States Department of Agriculture (USDA) in Washington, USA, kindly provided the seeds [26].

2.3 Experimental Setup

Fresh seeds were germinated in PINDSTRUP substrate (dark sphagnum peat mixed with 30% natural, fibrous material, 50 g of micronutrients). At two true leaf stages (~10 days), the seedlings were transferred into the hydroponic system containing water. After one day, the Hoagland solution was added. Then five days later, salt was added incrementally ($50 \text{ mM NaCl day}^{-1}$) to avoid osmotic shock and damage to the root until the 400 mM NaCl concentration threshold of treatment was achieved [16,27,28]. As necessary, a consistent level of solution (7 L) was maintained by adding nutrient solution with the respective NaCl concentrations. The plants were arranged in a complete randomized block design in the hydroponic box, with six biological replicates per treatment, and grown in a greenhouse at $24 \pm 2^\circ\text{C}$ with 65-70% relative humidity and at a 16 h light ($400 \text{ u mol m}^{-2} \text{ s}^{-1}$)/8 h dark cycle.

2.4 Parameter Determined

Except for the physiological parameters, stomatal index, and epidermal bladder cell measurements, which were done on the 45th day. All other samples were harvested immediately at the end of the treatment (400 mM NaCl, 24th day) at the different time points (0 (CK- untreated plants that were grown parallel to the treated plants), 1/2, 1, 3, 6 and 24 h post-treatment time points).

2.4.1 Morphological and growth analysis

(a) The Epidermal Bladder Cells (EBC) and Stomatal Index (SI)

Leaves (six leaves per plant: three young - third to fifth from the tip and three mature - the lowest three non-senescent leaves) were taken from three plants per treatment and CK of both genotypes. The leaves were sampled before flowering (~45 days), allowing for more plant maturity to assess the differential distribution with time. For EBCs, they were observed and photographed under an optical microscope (x100), after which the epidermal bladder cell distribution was evaluated [17,21]. For the stomatal index, a thin layer of transparent nail polish was evenly applied to both the adaxial and abaxial epidermal surfaces. After drying (~20 min), the nail polish blotting film, with the respective epidermal imprints (~ 1 cm^2), was carefully removed and placed on microscopic glass slides and then covered with transparent adhesive tape. The imprints were then carefully observed 100 times under a microscope, and the total epidermal and stomatal cells were determined through digital photography [17,29-31]. The stomatal index was determined using the developed formula: $SI (\%) = N_s / (E_c + N_s) \times 100$, where N_s is the total number of stomata in view, and E_c is the total number of epidermal cells [32].

(b) Dry biomass

Dry weight (DW) was determined by apportioning three plants each from CK and 400 mM NaCl into the shoot and root. Samples were weighed and then wrapped with aluminum foil and oven-dried at 105°C for 19 min, followed by 80°C for 24 h. After constant mass was achieved, samples were removed, and the dry weight of the shoot and root were measured. Leaf samples were digested to quantify magnesium (Mg^{2+}), calcium (Ca^{2+}), sodium (Na^+), and potassium (K^+) [33-35].

2.4.2 Physiological analysis

(a) Relative water content (RWC)

Leaves were harvested from midday for relative water content, and the fresh weight (FW) was measured. Leaves were floated in ddH₂O for 4 h and then reweighed to determine the turgid weight (TW) after being sapped with a paper towel to remove the surface water. Next, dry weight (DW) was determined: Samples were

weighed and then wrapped with aluminum foil and oven-dried at 105°C for 19 min, followed by 80°C for 24 h. After constant mass was achieved, samples were removed, and the dry weight of the samples was measured. The RWC was determined with the following formula: $RWC = (TFW - DW / TW - DW) \times 100$ [33,36-38].

(b) Membrane stability index (MSI)

Leaves were harvested from each plant during the midday period and washed with tap H₂O once. Then the leaves were washed twice with dH₂O and finally once with ddH₂O to remove surface salts and contaminants. Leaves were then sapped with a paper towel to remove excess water, then discs (8mm) were cut with a cork borer, weighed (~0.1g) in each set, and placed into two separate 15 mL falcon tubes to which 10 mL of ddH₂O was added. One set of tubes was placed in a water bath at 40°C for 30 minutes. At the same time, the other was placed in another at 100°C for 15 minutes. After heating, both sets of tubes were allowed to cool, and then the leaf leachates' electrical conductivity (EC) was determined using an Extech Instruments, ExStik11 EC/Sal/TDS meter. The membrane stability index (MSI) was then determined by applying the formula: $MSI = 1 - (C_1 / C_2) \times 100$, where C₁ and C₂ = Electrical conductivity of leaf leachate at 40 and 100 °C, respectively [36-39].

(c) Assimilatory pigments contents

Chlorophyll and carotenoid were estimated via the non-maceration method. Leaf samples (20 mg) (were immersed in 10 mL of dimethyl sulphoxide (DMSO) at 65°C for 4 h and then cooled [40,41]. Absorbance was read spectrophotometrically at 645, 663, and 470 nm with DMSO as the blank, chlorophyll [42], and carotenoid [43] were quantified.

(d) Leaf-level gas exchange

The LICOR 6800 Portable Photosynthesis System (LiCor instrument, Inc., NE, USA) was used to measure the net photosynthesis, transpiration rate, intercellular carbon dioxide, and stomatal conductance. That measurement in three randomly selected fully expanded leaves at three measurements per leaf for each treatment for each plant (~45 days). Measurements were taken at ambient CO₂ concentration (380 μmol mol⁻¹), light exposure (400 μmol m⁻²s⁻¹), relative humidity controlled at ~65%, and leaf chamber temperature stable at 24°C. The lights in the

glasshouse were kept on for about 4 h before and during the measurement period (10:00-14:00 h) to maintain a relatively stable light level to give consistency in measurements [44,45].

2.5 Statistical Analysis

The experiment was conducted in a completely randomized block design with three biological replicates per treatment. The data were subjected to analysis of variance test (ANOVA) and Tukey posthoc analyses expressed as the mean of the three replicates (mean±SD), and significance among treatments and varieties for morphological and physiological significance was checked at p<0.05 and p<0.01. The Statistical Package for Social Sciences (Version 21 for Windows, SPSS Inc., New York, NY, USA) and Minitab Statistical Software (Version 19 for Windows, Pennsylvania, USA) were used to perform the analysis.

3. RESULTS

3.1 Epidermal Bladder Cells (EBC)

Chadmo displayed a numerical increase in the epidermal bladder cells in both the adaxial and abaxial surfaces at 400 mM NaCl compared with the CK (Fig. 1 (a)). However, no significant difference (p<0.05) was found between the adaxial and abaxial surfaces. EBC average increase between the CK and 400 mM NaCl *Chadmo* was from 62.30±18.9 to 68.90 ±16.40 cells mm⁻² representing a 10.59% increase. Adaxially, the maximum and minimum EBCs in the treated *Chadmo* were 81 and 5 cells mm⁻², while for the CK, they were 77 and 9 cells mm⁻², respectively. On the abaxial surface, the maximum and minimum EBCs observed for the treated and CK *Chadmo* were 66, 81, 5, and 8 cells mm⁻², respectively. On the adaxial surface on *Chadmo*, EBCs increased from 31.75±15.89 to 33.10±22.73 cells mm⁻², while for the abaxial surface, the increase was from 31.25±18.9 to 35.80 ±16.40 cells mm⁻², representing 14.46 and 4.25% increase, respectively.

As with *Chadmo*, *Kankolla* also indicated increased EBCs on both the adaxial and abaxial surfaces, with no significant (p<0.05) difference in CK and treated. The adaxial surface increase was found to be 36.51±11.34 to 37.76±13.44 cells mm⁻². In comparison, on the abaxial surface, the increase was from 36.20±11.97 to 39.13±12.63 cells mm⁻². The increase in EBCs in the *Kankolla* was 3.45 and 8.10% in the adaxial

and abaxial surfaces, respectively. The maximum and minimum EBCs in the adaxial surface in the CK and treated were 58, 62, 17, and 12 cells mm^{-2} ; for the abaxial surface, they were 66, 61, 13, and 19 cells mm^{-2} , respectively (Fig. 1 (b)).

3.2 Stomatal Index

The stomatal density and index displayed a decreasing pattern in both *Chadmo* and *Kankolla* from CK to 400 mM NaCl treatment. In *Chadmo*, stomatal density decreased from $199.98 \pm 26.88 \text{ mm}^{-2}$ to $179.33 \pm 17.69 \text{ mm}^{-2}$ on adaxial surface and $243.74 \pm 27.26 \text{ mm}^{-2}$ to $224.04 \pm 26.80 \text{ mm}^{-2}$ on abaxial surface from CK to the treated *Chadmo*. This decrease represented 10.33 and 8.08% between the CK and treated *Chadmo* in adaxial and abaxial surfaces (Fig. 2 (a)). A similar trend was observed in the stomatal indices of both the adaxial and abaxial surfaces of *Chadmo*. In the stomatal index, the decrease was from 16.06 to 13.61% and 15.91 to 14.68% in adaxial and abaxial surfaces in CK and treated *Chadmo*, respectively. All the decreases from the CK to treated have been noted to have a significant difference at $p < 0.05$ in ANOVA and Tukey analyses (Fig. 2 (b)).

Kankolla's alterations in stomatal density in response to the treatment were more pronounced than *Chadmo's*. The decrease from the adaxial and abaxial was 211.29 ± 34.90 to

$118.25 \pm 39.65 \text{ mm}^{-2}$ and 270 ± 54.09 to $84.05 \pm 27.75 \text{ mm}^{-2}$ from the CK to treated plants representing 40.03 and 68.98% decrease (Fig. 2 (c)). Similarly, the stomatal index declined from 12.38 to 10.96% and 14.92 to 8.33% from the CK to 400 mM NaCl in the adaxial and abaxial surfaces, respectively. This decrease in the stomatal index was 11.46 and 44.28% between the adaxial and abaxial surfaces between the CK and treated *Kankolla*, respectively (Fig. 2 (d)). In addition, ANOVA and post hoc Tukey analyses identified significant differences in the stomatal density and stomatal index in the CK and the treated plants at the adaxial and abaxial surfaces (Fig. 2 (d)).

3.3 Biomass – Root/Shoot Ratio

The shoot/root dry weight ratio was similar for the *Chadmo* and *Kankolla* genotypes at the CK, having 8.43 and 8.54, respectively. However, after treatment, both indicated a significant reduction to 4.47 and 2.3, representing 46.96% and 73.07% in *Chadmo* and *Kankolla*, respectively (Fig. 3). The analysis of variance identified no significant difference ($p < 0.05$) between the CKs of the two genotypes. However, a significant difference ($p < 0.05$) was noted between the CK and 400 mM NaCl treatment for both genotypes. Moreover, a significant difference ($p < 0.05$) was also observed between the treated plants for both genotypes.

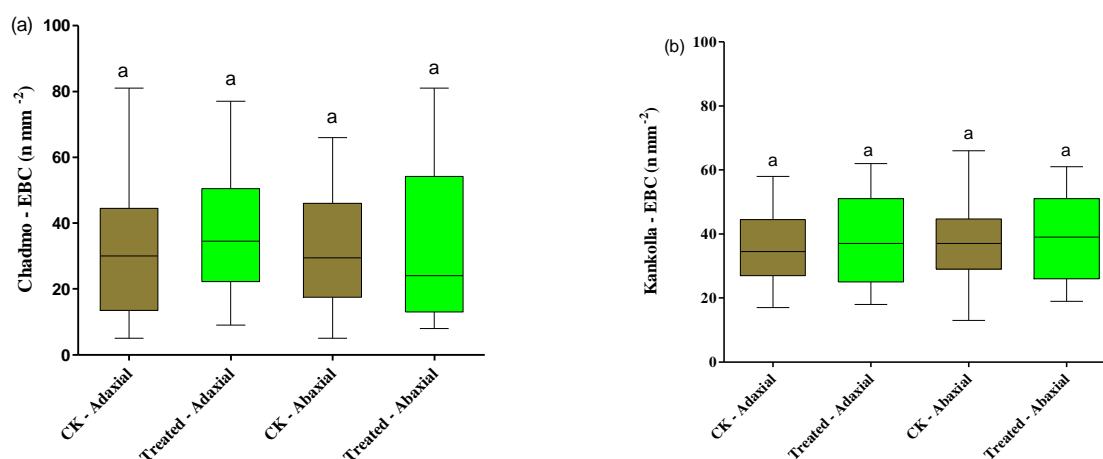


Fig. 1. Epidermal bladder cells (EBCs) distribution in (a) *Chadmo* and (b) *Kankolla* at CK and treated (400 mM NaCl) in the adaxial and abaxial surfaces. Mean \pm SD (n=60). Different letters indicate a significant difference at $p < 0.05$ in *Chadmo* and *Kankolla*, respectively

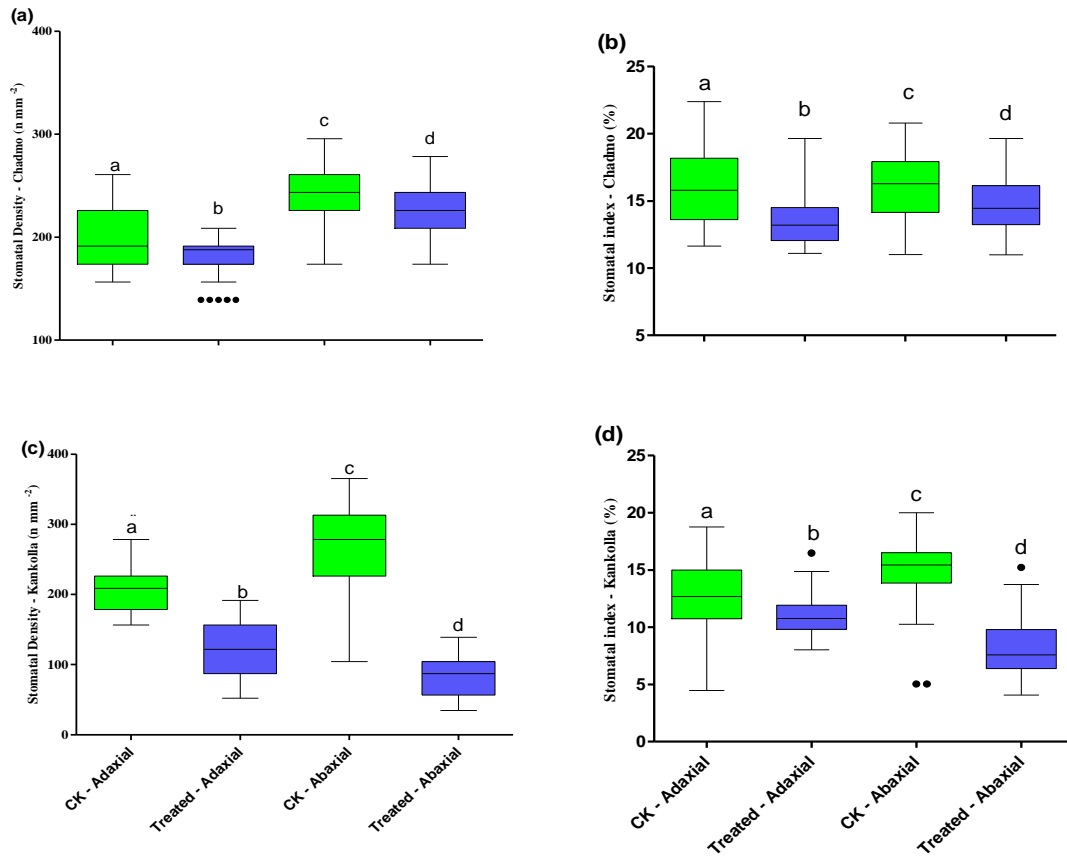


Fig. 2. (a) Stomatal density on *Chadmo*, (b) stomatal index on *Chadmo*, (c) stomatal density on *Kankolla*, and (d) stomatal index on *Kankolla* on CK and treated (400 mM NaCl) in the adaxial and abaxial surfaces. Means \pm SD (n=60). Different letters indicate a significant difference at $p < 0.05$ in *Chadmo* and *Kankolla*, respectively

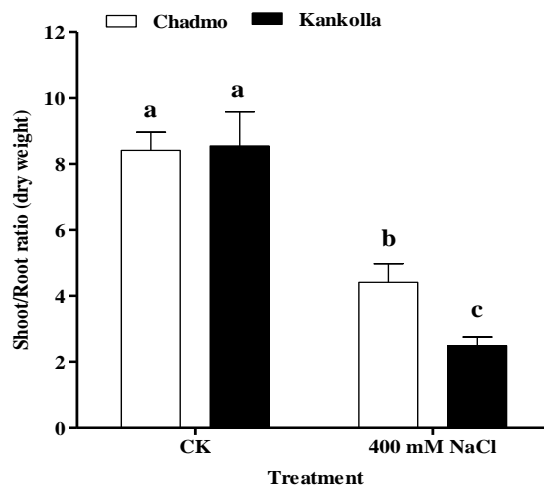


Fig. 3. Response of *Chadmo* and *Kankolla* to CK and 400 mM NaCl in root/shoot. Mean \pm SD (n=3). Different letters indicate a significant difference at $p < 0.05$ in *Chadmo* and *Kankolla*, respectively

3.4 Relative Water Content (RWC)

Chadmo had a higher RWC in control with 98.21%, and the treated plants with 81.56%. For the *Kankolla*, the RWC for control was 82.25%, and for the treated, it was 71.40%. Comparatively, there was a higher reduction in the plants' RWC from the control to treated conditions in the *Chadmo* and *Kankolla* genotypes, with 16.69 and 13.19%, respectively. Significant differences were observed in *Chadmo* and *Kankolla* between the CK and 400 mM NaCl, respectively (Fig. 4).

3.5 Membrane Stability Index (MSI)

In both genotypes, MSI decreased with salinity stress at treated conditions. Notably, the MSI for the *Chadmo* was higher under control and treated at 85.49 and 55.16%, respectively. As a comparison, the *Kankolla* at the control and treatment was 80.40 and 40.99%, respectively. For MSI between control and treatment for the *Chadmo* and *Kankolla*, there was a 35.48 and 49.01% reduction, respectively (Fig. 5). MSI between genotypes was not significant ($p < 0.01$) at the level of the control while under treatment, the *Kankolla* being ~ 10% lower than the *Chadmo*. On the contrary, a significant difference was observed ($p < 0.01$) between the two

genotypes under treatment, with the *Chadmo* having about 15% higher than the *Kankolla*.

3.6 Assimilatory Pigment Content

Total chlorophyll and carotenoid contents displayed a similar pattern in both genotypes for the CK and 400 mM NaCl; a decreasing trend with increasing salt concentration was observed. The chlorophyll content was 35.64 ± 1.61 and 29.96 ± 4.79 mg g^{-1} and 35.35 ± 1.00 and 21.62 ± 2.16 mg g^{-1} for *Chadmo* and *Kankolla* at the CK and 400 mM NaCl (Fig. 6 (a)). Total chlorophyll decreased slightly by 12.86% between the CK and 400 mM NaCl for the *Chadmo*, representing no significant difference ($p < 0.05$). However, a 30% decrease was observed between the CK and 400 mM NaCl for the *Kankolla*, indicating a significant difference ($p < 0.05$). Besides, a significant difference ($p < 0.05$) was observed for both *Chadmo* and *Kankolla* genotypes under 400 mM NaCl. For carotenoid, *Chadmo* had 2.69 ± 0.21 and 2.03 ± 0.38 mg g^{-1} , *Kankolla* had 2.61 ± 0.33 and 1.15 ± 0.11 mg g^{-1} at the CK and 400 mM NaCl, respectively (Fig. 6 (b)). Moreover, the decrease in carotenoid for the *Chadmo* between CK and 400 mM NaCl was 49.24%, while for the *Kankolla*; it was 57.97%.

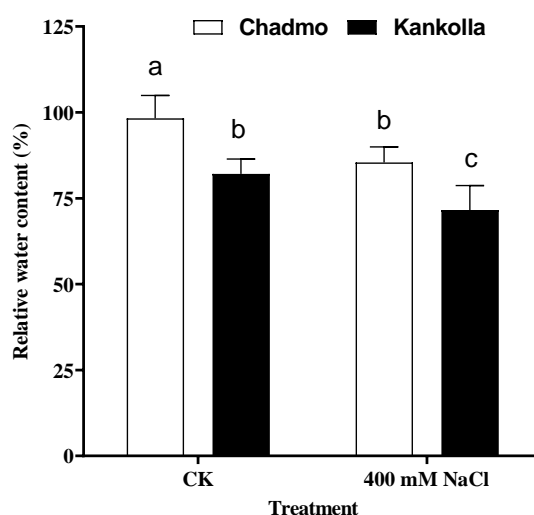


Fig. 4. Response of *Chadmo* and *Kankolla* to 400 mM NaCl and control: Relative Water Content (RWC). Mean \pm SD (n=3). Different letters indicate a significant difference at $p < 0.05$ in *Chadmo* and *Kankolla*, respectively

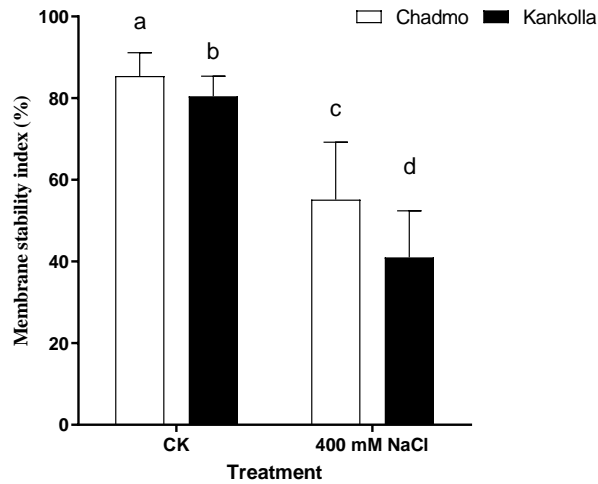


Fig. 5. Response of *Kankolla* and salt-tolerant in membrane stability index to CK and 400 mM NaCl. Means \pm SD (n=3). Different letters indicate a significant difference at $p < 0.05$ in *Chadmo* and *Kankolla*, respectively

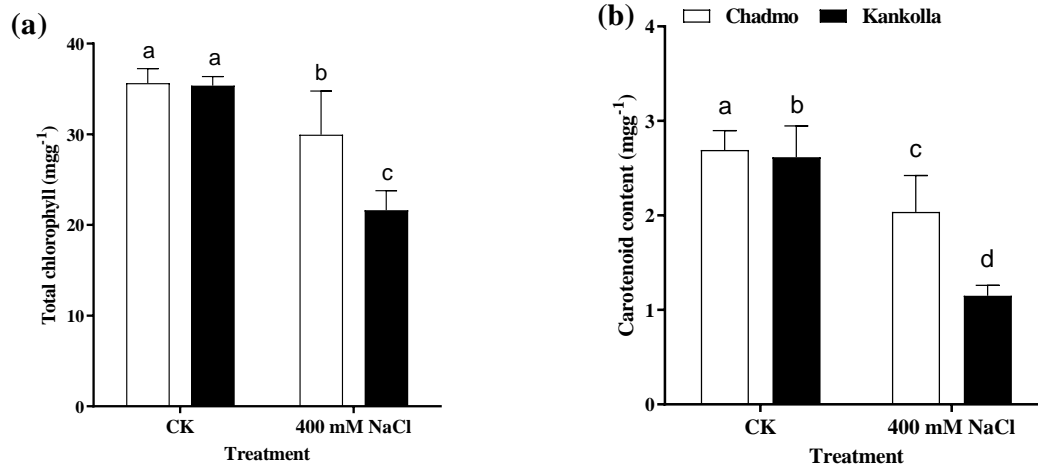


Fig. 6. Response of *Chadmo* and *Kankolla* to 400 mM NaCl and control in contents of (a) total chlorophyll and (b) carotenoid. Means \pm SD (n=4). Different letters indicate a significant difference at $p < 0.05$ in *Chadmo* and *Kankolla*, respectively

3.7 Leaf-level gas exchange

The net photosynthesis (Pn), transpiration rate, stomatal conductance, and intercellular carbon dioxide measurements exhibited metabolism-reduction imposed by salt stress in both genotypes. While both genotypes displayed phenotypes of halophytic plants with reduced metabolic functions and attenuation in plant height, the *Kankolla* genotypes exhibited a higher percentage of reduction, displayed in chlorotic leaf spots and slight leaf curling (Fig. 7 (a)).

Under 400 mM NaCl condition and CK, *Chadmo*'s average net photosynthetic rate reduced from 15.73 ± 2.97 to 13.02 ± 2.75 $\mu\text{mol CO}_2 \text{ m}^{-1} \text{ s}^{-1}$, indicating 17.24% reduction while in the *Kankolla*, the reduction from was 13.43 ± 4.12 to 8.34 ± 3.16 $\mu\text{mol CO}_2 \text{ m}^{-1} \text{ s}^{-1}$ representing 37.92% decline (Fig. 8 (a)). Similarly, the transpiration rate reducing from CK and 400 mM NaCl treatment in *Chadmo* and *Kankolla* genotypes from 0.0068 ± 0.001 to 0.0032 ± 0.001 $\mu\text{mol of CO}_2 \text{ m}^{-2} \text{ s}^{-1}$ and 0.0056 ± 0.002 and 0.00323 ± 0.001 $\mu\text{mol of CO}_2 \text{ m}^{-2} \text{ s}^{-1}$, respectively

(Fig. 8 (b)). Concerning stomatal conductance, the *Chadmo* had a higher exchange ($1.16 \pm 0.55 \mu\text{mol H}_2\text{O m}^{-1}\text{s}^{-1}$) than *Kankolla* ($1.06 \pm 0.88 \mu\text{mol H}_2\text{O m}^{-1}\text{s}^{-1}$). Moreover, this was reduced in the *Chadmo* and *Kankolla* to 0.41 ± 0.22 and $0.14 \pm 0.17 \mu\text{mol H}_2\text{O m}^{-1}\text{s}^{-1}$, representing 64.73 and 86.18% decline, respectively (Fig. 8 (c)). Intercellular carbon dioxide measurement indicated a decrease from the CK to 400 mM NaCl, with the *Chadmo* and *Kankolla* genotypes exhibiting a reduction from 343.54 ± 19.92 to $305.71 \pm 28.82 \text{ CO}_2 \mu\text{mol mol}^{-1}$ and 341.08 ± 26.43 and $279.59 \pm 60.37 \text{ CO}_2 \mu\text{mol mol}^{-1}$ representing 11.01 and 18.02%, respectively (Fig. 8 (d)). In addition, significant differences were identified by ANOVA analysis ($p < 0.05$) in the net photosynthesis, transpiration rate, stomatal conductance, and intercellular carbon dioxide between the control and treatment.

4. DISCUSSION

Reduction in dry biomass is common among plants under saline conditions and displayed further reduction as salinity increases up to the point of survival [7,46,47]. This study posited that even though the *Chadmo* is deemed a more salt-

tolerant genotype, salinity does impact the plant. In contrast, the plant survived; it is not completely void of the effects on its general physiology, which can eventually propel a reduction in dry biomass. Both genotypes showed a significant ($p < 0.05$) decrease in the root/shoot dry biomass ratio between the CK and 400 mM NaCl, which indicates the effect salinity has on plant growth and development [19,48]. Shabala et al. [15] identified a 50% reduction in biomass in the quinoa cv 3706 grown in 400 mM NaCl compared with the control. Besides, Ruiz et al [49] observed a 60-70% root-to-shoot fresh weight ratio in the landraces *Villarrica* and 49 grown in 300 mM NaCl compared with the CK, while Gómez-Pando et al. [21] identified a decrease in leaf and root dry mass per plant by 81.13 and 80% in accessions 154 and 19 respectively in 300 mM NaCl relative to the control. Interestingly, no significant difference ($p < 0.05$) was observed in total plant dry weight across the treatments in *BO78* grown in 150 to 750 mM NaCl as compared with the control [17]. Hariadi et al. [16] contended that both shoot and root fresh weight decreased significantly by 20 and 50%, respectively, relative to the control in quinoa cv 5206.

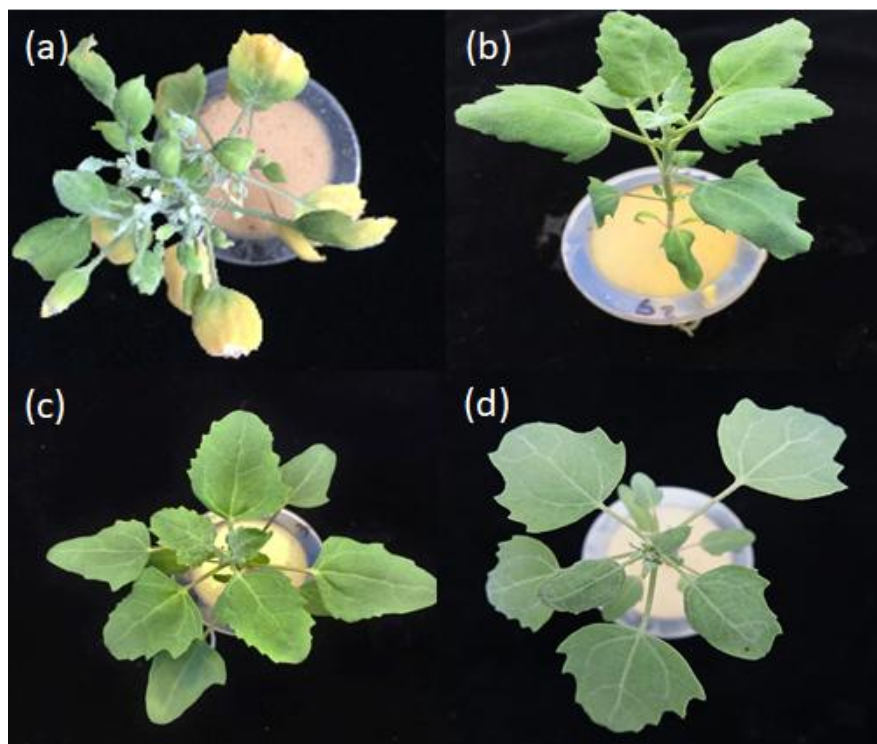


Fig. 7. Phenotypic response to salinity in *Kankolla* (a) treated – curling and chlorotic leaves (b) control and salt-tolerant - *Chadmo* (c) treated (d) control

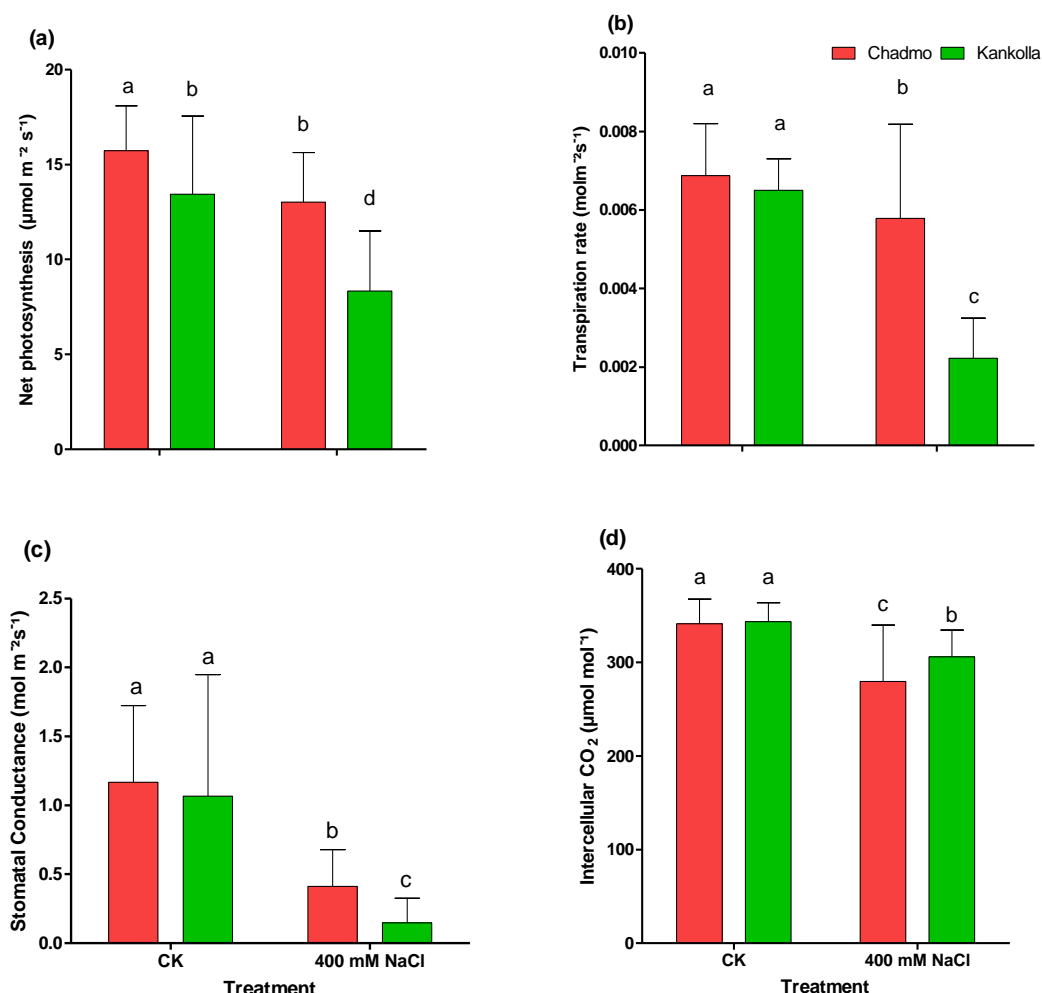


Fig. 8. Physiological responses of *Chadmo* and *Kankolla* to CK and 400 mM NaCl (a) net photosynthesis (b) transpiration rate (c) stomatal conductance, and (c) intercellular CO₂. Means ± SD (n=6). Different letters indicate a significant difference at p<0.05 in *Chadmo* and *Kankolla*, respectively

Measuring relative water content in plants subjected to salinity stress is physiologically relevant to determine their tolerance level. Previous studies have outlined that under saline conditions, it adjusts their osmotic potential to maintain turgor pressure, increasing water content, particularly in the leaf [50,51]. On the contrary, in this study, both varieties showed that RWC decreased significantly (p<0.05), with salt-tolerant *Chadmo* reducing by 17.44% and salt-sensitive *Kankolla* by 10.85% from the control to 400 mM NaCl. Plants curtail water loss by developing cutinized epidermal layer and facilitating stomatal closure in conjunction with accumulated ABA in the chloroplast and guard cells [13,52-54]. Plant injury is another resultant effect of a highly salinized environment, and it can be in many forms, such as injury to roots,

stem, and leaf cells. Therefore, plants responded by developing more robust membrane systems to avoid such damaging effects. Hence, one of the features to assess salinity tolerance is the level of injury experienced by the membrane through membrane stability index or electrolyte leakage, which measures the cell membrane injury caused by environmental stress [55-57]. Comparatively, plants with reduced membrane stability index have a higher tolerance level for abiotic stress such as salinity and have been employed to screen for salinity tolerance in plants [58]. In this study, we observed a significant difference (p<0.01) between salt-tolerant *Chadmo* and salt-sensitive *Kankolla*, with the latter having 13.53% MSI more than salt-tolerant *Chadmo*. No significant difference was observed between the controls of the two

varieties at $p < 0.001$. Previous studies have also related a reduction in MSI to plant salinity tolerance [35,56,59-62].

Total chlorophyll and carotenoid contents decreased more at 400 NaCl than in the CK. Moreover, the reduction between the control and 400 mM NaCl in salt-sensitive *Chadmo* was insignificant, while for salt-sensitive *Kankolla*, a significant difference was identified by ANOVA at $p < 0.05$. Leaf chlorosis, white spots/appearance, and leaf rolling were also observed in treated salt-sensitive *Kankolla*, providing further evidence that salinity impacts the biosynthesis of chlorophyll or is destructive post-synthesis [17,63-67]. Ruffino et al [68] reported a decrease in total chlorophyll in salt-treated as compared with the CK in quinoa cultivar *Sajama* seedlings over 21 days. They concluded that total chlorophyll decreased by 40.2, 25.5, and 38.9% after 6, 12, and 21 days of 250 mM NaCl compared with the CK. They posited that Chlorophyll *a* had *b* significant difference while total chlorophyll had no significant differences in reduction between the CK and 250 mM NaCl. Similarly, carotenoid contents in *Sajama* decreased between the CK and 250 mM NaCl by 20.8, 27.01, and 11.5% after 6, 12, and 21 days, respectively. Other studies corroborate our results, that while no significant difference was identified, in some instances, chlorophylls *a* and *b* concentrations and carotenoids were lower in the saline conditions than CK [64,66,67]. Other studies corroborated in that while no significant difference was identified, in some instances, chlorophylls *a* and *b* concentrations and carotenoid were lower in the saline conditions than t control [63,64,66,67,69-71]. Accordingly, other evidence of reduced chlorophyll and carotenoid contents resulting from salinity was noted in wheat [37,72,73], *Salvinia molesta* and *Pistia stratiotes* [74], pea [56,75], mangrove [76], bean [77,78], cotton [79], oats [28] and olive saplings [80].

Salinity influences photosynthesis, transpiration rate, reduces stomatal opening, and decreases intercellular carbon dioxide; these influence plant productivity and eventually lead to lower biomass at higher saline concentrations. Both genotypes displayed reduced net photosynthesis, stomatal conductance, transpiration rate, and intercellular CO₂ at 400 mM NaCl than the CK. This finding can be corroborated by numerous other studies involving other plants [16,22,76,81-84]. Sanchez et al. [8] reported significant changes in stomatal conductance and no significant difference in

photosynthesis in the quinoa cultivar 'Real' when exposed to low salinity (3.85 gL⁻¹) and high salinity (8.05gL⁻¹) over five weeks. Significant differences were observed in the reduction of net photosynthesis (59.39±10.79 to 17.13±2.53 μmol CO₂ m⁻¹s⁻¹), transpiration rates (16.05±4.51 to 2.8±0.76 μmol of CO₂ m⁻² s⁻¹), stomatal conductance) (4.84±1.05±to 0.63 μmol H₂O m⁻¹s⁻¹, taken as the inverse of stomatal resistance) and intercellular CO₂ (0.60±0.05 to 0.18±0.13 CO₂ μmol mol⁻¹) the quinoa cultivar 'Hualhuas' between the CK and 500 mM NaCl after six weeks of treatment [85].

5. CONCLUSION

In conclusion, our results indicated that salinity influences several responses in both *Chadmo* and *Kankolla* towards plant acclimation. The observed effects were attributed to phenotypic plasticity towards salinity. They exhibited significant differences between *Chadmo* and *Kankolla* in shoot/root biomass, membrane stability index, and relative water content, which were significantly lower in *Kankolla*. Similarly, significant differences were observed in the net photosynthesis, stomatal conductance, transpiration rate, and intercellular carbon dioxide. These differences are symptomatic responses to plant salinity. Moreover, as differentially expressed, these traits in both genotypes confirmed that *Chadmo* responded more favorably to salinity than *Kankolla*. Besides, the leaf curling, white tip, and chlorosis in treated *Kankolla* provided further evidence of susceptibility to salinity. This study is important to identify a genotype that is tolerant to salinity. Furthermore, this genotype can be genetically engineered to improve adaptation to the saline environment and bolster agronomic traits and resilience in other crop plants. That is compellingly urgent as more of our arable lands are becoming salinized.

ACKNOWLEDGEMENTS

The authors appreciate Fujian Agriculture and Forestry University for providing the necessary funding and laboratories that were appropriate to complete this project. The effort by other members of the laboratory for their tremendous contributions.

COMPETING INTERESTS

Authors have declared that no competing interests exist.

REFERENCES

1. FAO IFAD, UNICEF, WFP, WHO. The state of food security and nutrition in the world 2018. Building climate resilience for food security and nutrition; 2018.
2. UN. Department of economic and social affairs, population division. World population prospects. 2017 revision, Key Findings and Advance Tables. Working Paper No. ESA/P/WP/248; 2017.
3. Shabala S, Bose J, Hedrich R. Salt bladders: Do they matter? Trends Plant Sci. 2014;19(11):687-91.
4. Shelden MC, Dias DA, Jayasinghe NS, Bacic A, Roessner U. Root spatial metabolite profiling of two genotypes of barley (*Hordeum vulgare* L.) reveals differences in response to short-term salt stress. J Exp Bot. 2016;67(12):3731-45. doi: 10.1093/jxb/erw059, PMID 26946124.
5. Wang H-L, Tian C-Y, Jiang L, Wang L. Remediation of heavy metals contaminated saline soils: a halophyte choice? ACS Publications; 2013.
6. Brownlee C. Plant physiology: One way to dump salt. Curr Biol. 2018;28(19):R1145-7.
7. Flowers TJ, Colmer TD. Salinity tolerance in halophytes. New Phytol. 2008;179(4):945-63.
8. Sanchez HB, Lemeur R, Damme PV, Jacobsen S-E. Ecophysiological analysis of drought and salinity stress of quinoa (*Chenopodium quinoa* Willd.). Food Rev Int. 2003;19(1-2):111-9.
9. Glenn EP, Anday T, Chaturvedi R, Martinez-Garcia R, Pearlstein S, Soliz D, et al. Three halophytes for saline-water agriculture: An oilseed, a forage and a grain crop. Environ Exp Bot. 2013;92:110-21.
10. Delatorre-Herrera J, Pinto M. Importance of ionic and osmotic components of salt stress on the germination of four quinoa (*Chenopodium quinoa* Willd.) selections. Chil J Agric Res. 2009;69(4):477-85.
11. Flowers TJ, Yeo AR. Breeding for salinity resistance in crop plants: where next? Funct Plant Biol. 1995;22(6):875.
12. Mäser P, Eckelman B, Vaidyanathan R, Horie T, Fairbairn DJ, Kubo M, et al. Altered shoot/root Na⁺ distribution and bifurcating salt sensitivity in Arabidopsis by genetic disruption of the Na⁺ transporter AtHKT1. FEBS Lett. 2002;531(2):157-61.
13. Jaikishun S, Song S, Yang Z. Biochemical Characterization and Responses of Two Contrasting Genotypes of *Chenopodium quinoa* Willd. to Salinity in a Hydroponic System. Asian Res J Agric. 2023;16(1):41-54.
14. Blumwald E. Sodium transport and salt tolerance in plants. Curr Opin Cell Biol. 2000;12(4):431-4.
15. Shabala L, Mackay A, Tian Y, Jacobsen SE, Zhou D, Shabala S. Oxidative stress protection and stomatal patterning as components of salinity tolerance mechanism in quinoa (*Chenopodium quinoa*). Physiol Plant. 2012;146(1):26-38.
16. Hariadi Y, Marandon K, Tian Y, Jacobsen SE, Shabala S. Ionic and osmotic relations in quinoa (*Chenopodium quinoa* Willd.) plants grown at various salinity levels. J Exp Bot. 2011;62(1):185-93.
17. Orsini F, Accorsi M, Gianquinto G, Dinelli G, Antognoni F, Carrasco KBR, et al. Beyond the ionic and osmotic response to salinity in *Chenopodium quinoa*: Functional elements of successful halophytism. Funct Plant Biol. 2011;38(10):818-31.
18. Pulvento C, Riccardi M, Lavini A, Iafelice G, Marconi E, d'Andria R. Yield and quality characteristics of quinoa grown in open field under different saline and non-saline irrigation regimes. J Agron Crop Sci. 2012;198(4):254-63.
19. Toubali S, Meddich A. Role of combined use of mycorrhizae fungi and plant growth promoting rhizobacteria in the tolerance of quinoa plants under salt stress. Gesunde Pflanzen; 2023.
20. Jacobsen S-E, Mujica A, Jensen CR. The resistance of Quinoa (*Chenopodium quinoa* Willd.) to Adverse Abiotic Factors. Food Rev Int. 2003;19(1-2):99-109.
21. Gómez-Pando LR, Álvarez-Castro R, Eguiluz-de la Barra A. Short Communication: Effect of Salt Stress on Peruvian Germplasm of *Chenopodium quinoa* Willd.: A Promising Crop. J Agron Crop Sci. 2010;196(5):391-6.
22. Morales AJ, Bajgain P, Garver Z, Maughan PJ, Udall JA. Physiological responses of *Chenopodium quinoa* to salt stress. Int J Plant Physiol Biochem. 2011;3:219-32.
23. Filho AM, Pirozi MR, Borges JT, Pinheiro Sant'Ana HM, Chaves JB, Coimbra JS. Quinoa: nutritional, functional, and antinutritional aspects. Crit Rev Food Sci Nutr. 2017;57(8):1618-30.
24. Valencia-Chamorro S. Quinoa. In: Encyclopedia of food science and nutrition. (Ed. B Caballero). 2003;8:4895-902.

25. Ruales J, Nair BM. Nutritional quality of the protein in quinoa (*Chenopodium quinoa* Willd.) seeds. *Plant Foods Hum Nutr.* 1992;42(1):1-11.
26. USDA NRCS. The Plants Database. 15 April 2020). Greensboro, NC: National Plant Data Team. USA. 2018;27401-4901.
27. Hoagland DR, Arnon DI. The water-culture method for growing plants without soil. College of Agriculture, University of California Berkeley; 1950.
28. Bai J, Yan W, Wang Y, Yin Q, Liu J, Wight C, et al. Screening oat genotypes for tolerance to salinity and alkalinity. *Front Plant Sci.* 2018;9:1302.
29. Martínez-Sancho E, Vásconez Navas LK, Seidel H, Dorado-Liñán I, Menzel A. Responses of contrasting tree functional types to air warming and drought. *Forests.* 2017;8(11):450.
30. Zhu J, Yu Q, Xu C, Li J, Qin G. Rapid estimation of stomatal density and stomatal area of plant leaves based on object-oriented classification and its ecological trade-off strategy analysis. *Forests.* 2018;9(10):616.
31. Gitz D, Baker JT. Methods for creating stomatal impressions directly onto archivable slides. *Agron J.* 2009;101(1):232-6.
32. Salisbury EJ. On the causes and ecological significance of stomatal frequency with special reference to the woodland flora. *Philos Trans R Soc Lond B B.* 1927;848-52.
33. Krishnamurthy L, Serraj R, Hash CT, Dakheel AJ, Reddy BVS. Screening sorghum genotypes for salinity tolerant biomass production. *Euphytica.* 2007;156(1-2):15-24.
34. Meher SP, Shivakrishna P, Ashok Reddy K, Manohar Rao D. Effect of PEG-6000 imposed drought stress on RNA content, relative water content (RWC), and chlorophyll content in peanut leaves and roots. *Saudi J Biol Sci.* 2018;25(2): 285-9.
35. Sairam RK, Srivastava GC, Agarwal S, Meena RC. Differences in antioxidant activity in response to salinity stress in tolerant and susceptible wheat genotypes. *Biol Plant.* 2005;49(1):85-91.
36. Matin MA, Brown JH, Ferguson H. Leaf water potential, relative water content, and diffusive resistance as screening techniques for drought resistance in barley. *Agron J.* 1989;81(1):100-5.
37. Sairam RK, Rao KV, Srivastava GC. Differential response of wheat genotypes to long term salinity stress in relation to oxidative stress, antioxidant activity and osmolyte concentration. *Plant Sci.* 2002;163(5):1037-46.
38. Goyal E, Amit SK, Singh RS, Mahato AK, Chand S, Kanika K. Transcriptome profiling of the salt-stress response in *Triticum aestivum* cv. Kharchia Local. *Sci Rep.* 2016;6:27752.
39. Pinhero RG, Rao MV, Paliyath G, Murr DP, Fletcher RA. Changes in activities of antioxidant enzymes and their relationship to genetic and paclobutrazol-induced chilling tolerance of maize seedlings. *Plant Physiol.* 1997;114(2):695-704.
40. Hiscox JD, Israelstam GF. A method for the extraction of chlorophyll from leaf tissue without maceration. *Can J Bot.* 1979;57(12):1332-4.
41. Tait MA, Hik DS. Is dimethylsulfoxide a reliable solvent for extracting chlorophyll under field conditions? *Photosynth Res.* 2003;78(1):87-91.
42. Arnon DI. Copper enzymes in isolated chloroplasts. Polyphenoloxidase in *Beta vulgaris*. *Plant Physiol.* 1949;24(1):1-15.
43. Lichtenthaler H, K, Wellburn AR. Determinations of total carotenoids and chlorophylls a and b of leaf extracts in different solvents. Portland Press Limited; 1983.
44. Ouyang W, Struik PC, Yin X, Yang J. Stomatal conductance, mesophyll conductance, and transpiration efficiency in relation to leaf anatomy in rice and wheat genotypes under drought. *J Exp Bot.* 2017;68(18):5191-205.
45. Savvides AM, Fotopoulos V. Two inexpensive and non-destructive techniques to correct for smaller-than-gasket leaf area in gas exchange measurements. *Front Plant Sci.* 2018;9:548.
46. Ben Abdallah SB, Aung B, Amyot L, Lalin I, Lachâal M, Karray-Bourouï N, et al. Salt stress (NaCl) affects plant growth and branch pathways of carotenoid and flavonoid biosyntheses in *Solanum nigrum*. *Acta Physiol Plant.* 2016;38(3):72.
47. Hoque MN, Hannan A, Imran S, Paul NC, Mondal MF, Sadhin MMR, et al. Plant growth-promoting rhizobacteria-mediated adaptive responses of plants under salinity stress. *J Plant Growth Regul.* 2023;42(3): 1307-26.

48. Flowers TJ, Galal HK, Bromham L. Evolution of halophytes: multiple origins of salt tolerance in land plants. *Funct Plant Biol.* 2010;37(7):604.
49. Ruiz KB, Rapparini F, Bertazza G, Silva H, Torrigiani P, Biondi S. Comparing salt-induced responses at the transcript level in a salares and coastal-lowlands landrace of quinoa (*Chenopodium quinoa* Willd). *Environmental and Experimental Botany.* 2017;139:127-42/42.
50. Negrão S, Schmöckel SM, Tester M. Evaluating physiological responses of plants to salinity stress. *Ann Bot.* 2017;119(1):1-11.
51. Liu X, Xu X, Ji M, Amombo E, Fu J. Growth, photosynthesis, and gene expression of Bermudagrass in response to salinity and shade stress. *J Am Soc Hortic Sci.* 2023;148(1):1-8.
52. Ng LM, Melcher K, Teh BT, Xu HE. Abscisic acid perception and signaling: structural mechanisms and applications. *Acta Pharmacol Sin.* 2014;35(5):567-84.
53. Seki M, Ishida J, Nakajima M, Enju A, Iida K, et al. 9 Genomic analysis of stress response. *Plant Abiotic Stress.* 2005; 19:248.
54. Yamaguchi-Shinozaki K, Shinozaki K. Transcriptional regulatory networks in cellular responses and tolerance to dehydration and cold stresses. *Annu Rev Plant Biol.* 2006;57:781-803.
55. Shabala S, Mackay A. Ion transport in halophytes. *Adv Bot Res.* 2011;57:151-99.
56. Shahid M, Balal R, Pervez M, Abbas T, Ashfaq M, et al. Differential response of pea (*Pisum sativum* L.) Genotypes to salt stress in relation to the growth, physiological attributes antioxidant activity and organic solutes. *Aust J Crop Sci.* 2012;6:828.
57. Rady MM, Mossa A-TH, Youssof AMA, Osman AS, Ahmed SMA, Mohamed IAA. Exploring the reinforcing effect of nanopotassium on the antioxidant defense system reflecting the increased yield and quality of salt-stressed squash plants. *Sci Hortic.* 2023;308:111609.
58. Blum A, Ebercon A. Cell membrane stability as a measure of drought and heat tolerance in wheat. *Crop Sci.* 1981;21(1):43-7.
59. Farkhondeh R, Nabizadeh E, Jalilnezhad N. Effect of salinity stress on proline content, membrane stability and water relations in two sugar beet cultivars. *Int J Agric Sci.* 2012;2:385-92.
60. Farooq S, Azam F. The use of cell membrane stability (CMS) technique to screen for salt tolerant wheat varieties. *J Plant Physiol.* 2006;163(6):629-37.
61. Sairam RK, Srivastava GC. Changes in antioxidant activity in sub-cellular fractions of tolerant and susceptible wheat genotypes in response to long term salt stress. *Plant Sci.* 2002;162(6):897-904.
62. Senguttuvel P, Vijayalakshmi C, Thiyagarajan K, Sritharan R, Geetha S, KannanBapu JR, et al. Differential response of rice seedlings to salt stress in relation to antioxidant enzyme activity and membrane stability index. *Arch Agron Soil Sci.* 2013;59(10):1359-71.
63. Aghaleh M, Niknam V, Ebrahimzadeh H, Razavi K. Salt stress effects on growth, pigments, proteins and lipid peroxidation in *Salicornia persica* and *S. europaea*. *Biol Plant.* 2009;53(2):243-8.
64. Chaves MM, Flexas J, Pinheiro C. Photosynthesis under drought and salt stress: Regulation mechanisms from whole plant to cell. *Ann Bot.* 2009;103(4):551-60.
65. Gomes MAdC, Pestana IA, Santa-Catarina C, Hauser-Davis RA, Suzuki MS. Salinity effects on photosynthetic pigments, proline, biomass and nitric oxide in *Salvinia auriculata* Aubl. *Acta Limnol Bras.* 2017;29.
66. Houimli SIM, Denden M, Mouhandes BD. Effects of 24-epibrassinolide on growth, chlorophyll, electrolyte leakage and proline by pepper plants under NaCl-stress. *Eurasian J Biosci.* 2010;4:96-104.
67. Pinheiro HA, Silva JV, Endres L, Ferreira VM, Câmara CD, Cabral FF, et al. Leaf gas exchange, chloroplastic pigments and dry matter accumulation in castor bean (*Ricinus communis* L.) seedlings subjected to salt stress conditions. *Ind Crops Prod.* 2008;27(3):385-92.
68. Ruffino AMC, Rosa M, Hilal M, González JA, Prado FE. The role of cotyledon metabolism in the establishment of quinoa (*Chenopodium quinoa*) seedlings growing under salinity. *Plant Soil.* 2010;326(1-2):213-24.
69. Jampeetong A, Brix H. Effects of NaCl salinity on growth, morphology, photosynthesis and proline accumulation of *Salvinia natans*. *Aquat Bot.* 2009; 91(3):181-6.

70. Netondo GW, Onyango JC, Beck E. Sorghum and salinity: II. Gas exchange and chlorophyll fluorescence of sorghum under salt stress. *Crop Sci.* 2004;44(3): 806-11.
71. Pérez-Romero JA, Barcia-Piedras JM, Redondo-Gómez S, Mateos-Naranjo E. Impact of short-term extreme temperature events on physiological performance of *Salicornia ramosissima* J. Woods under optimal and sub-optimal saline conditions. *Sci Rep.* 2019;9(1):659.
72. Srivastava J, Gupta S, Lal P, Muralia R, Kumar A. Effect of salt stress on physiological and biochemical parameters of wheat; 1988.
73. Thind S, Malik C. Carboxylation and related reactions in wheat seedlings under osmotic stress. *Plant Physiol Biochem;* 1988.
74. Upadhyay RK, Panda SK. Salt tolerance of two aquatic macrophytes, *Pistia stratiotes* and *Salvinia molesta*. *Biol Plant.* 2005; 49(1):157-9.
75. Hernández JA, Olmos E, Corpas FJ, Sevilla F, del Río LA. Salt-induced oxidative stress in chloroplasts of pea plants. *Plant Sci.* 1995;105(2):151-67.
76. Parida AK, Das AB, Mittra B. Effects of salt on growth, ion accumulation, photosynthesis and leaf anatomy of the mangrove, *Bruguiera parviflora*. *Trees Struct Funct.* 2004;18(2):167-74.
77. Gadallah MAA. Effects of proline and glycinebetaine on *Vicia faba* responses to salt stress. *Biol Plant.* 1999;42(2):249-57.
78. Taïbi K, Taïbi F, Ait Abderrahim LA, Ennajah A, Belkhodja M, Mulet JM. Effect of salt stress on growth, chlorophyll content, lipid peroxidation and antioxidant defence systems in *Phaseolus vulgaris* L. *S Afr J Bot.* 2016;105:306-12.
79. Saleh B. Effect of salt stress on growth and chlorophyll content of some cultivated cotton varieties grown in Syria. *Commun Soil Sci Plant Anal.* 2012;43(15):1976-83.
80. Centritto M, Loreto F, Chartzoulakis K. The use of low [CO₂] to estimate diffusional and non-diffusional limitations of photosynthetic capacity of salt-stressed olive saplings. *Plant Cell Environ.* 2003; 26(4):585-94.
81. Doganlar ZB, Demir K, Basak H, Gul I. Effects of salt stress on pigment and total soluble protein contents of three different tomato cultivars. *Afr J Agric Res.* 2010;5:2056-65.
82. Hasegawa PM, Bressan RA, Zhu JK, Bohnert HJ. Plant cellular and molecular responses to high salinity. *Annu Rev Plant Physiol Plant Mol Biol.* 2000; 51:463-99.
83. Moradi S, Yosefi R, Ghaderi O. Bioconcentration factor and relative growth rate of *Azolla (Azolla caroliniana)* in arsenic and salinity stress conditions. *Int J Agron Plant Prod.* 2013;4:2617-23.
84. Saxena P, Srivastava RP, Sharma ML. Studies on salinity stress tolerance in sugarcane varieties. *Sugar Tech.* 2010;12 (1):59-63.
85. Eisa S, Hussin S, Geissler N, Koyro H-W. Effect of NaCl salinity on water relations, photosynthesis and chemical composition of Quinoa (*Chenopodium quinoa* Willd.) as a potential cash crop halophyte. *Aust J Crop Sci.* 2012;6: 357-68.

© 2023 Jaikishun et al.; This is an Open Access article distributed under the terms of the Creative Commons Attribution License (<http://creativecommons.org/licenses/by/4.0>), which permits unrestricted use, distribution, and reproduction in any medium, provided the original work is properly cited.

Peer-review history:

The peer review history for this paper can be accessed here:
<https://www.sdiarticle5.com/review-history/100612>